

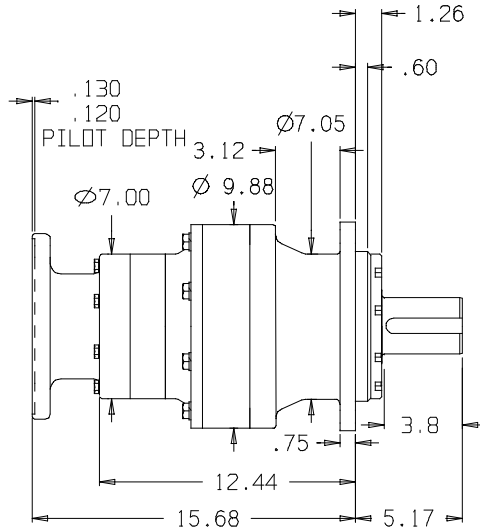
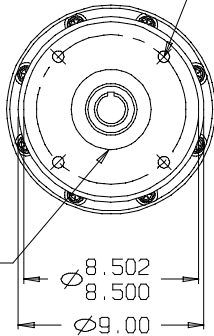
* RATIO DOES NOT CHANGE INSTALLATION DIMENSIONS

WWW.HECOGEAR.COM

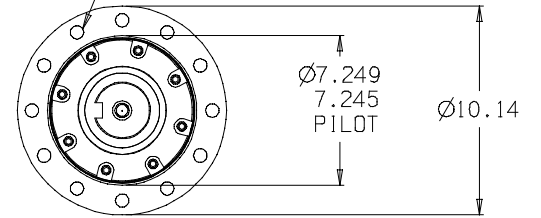
.56 DIA. THRU HOLES
ON 7.25 DIA. B.C.
TYP 4 PLACES

ADAPTER SHOWN WITH
KEYED INPUT SHAFT
SUN GEAR FOR CLARITY

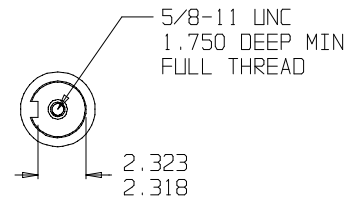
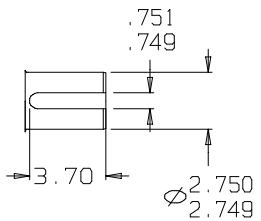
OIL SEAL
CR TYPE
CRWHA1



THRU HOLE
Ø.645/.655
12 HOLES EQ. SPACED
ON Ø8.750 B.C.



OUTPUT SHAFT DETAIL



©COPYRIGHT 2002, HECO GEAR, INC.

REV	DESCRIPTION	DATE	APPROVED
-	-	-	-
-	-	-	-
-	-	-	-
-	-	-	-
-	-	-	-

THIS DRAWING CONTAINS PROPRIETARY AND CONFIDENTIAL INFORMATION OF HECO GEAR, INC. IN ACCEPTING THIS DRAWING, (CUSTOMER) ACKNOWLEDGES THE VALUE OF THE INTELLECTUAL PROPERTY CONTAINED HEREIN AND AGREES THAT THE INFORMATION IN THIS DRAWING IS THE PROPERTY OF AND PROPRIETARY TO HECO GEAR, INC. AND MAY NOT BE REPRODUCED WITHOUT THE EXPRESS WRITTEN PERMISSION OF HECO GEAR, INC. ALL RIGHTS RESERVED.



2550 DEL WINDY STREET
WEST SACRAMENTO, CA 95808
(916) 292-5411 FAX (916) 273-0882

TITLE		MODEL 20 ASSEMBLY	
DESCRIPTION		HECO 20 MODEL CODE:	
		25DAF1 E 31*	
SIZE	DRAWN BY:	DWG NO.	REV
0	KSC	DD1012R-	-
SCALE:	DO NOT SCALE	DATE:	SHEET
		04/19/01	1 OF 1