

* RATIO DOES NOT CHANGE INSTALLATION DIMENSIONS

WWW.HECOGEAR.COM

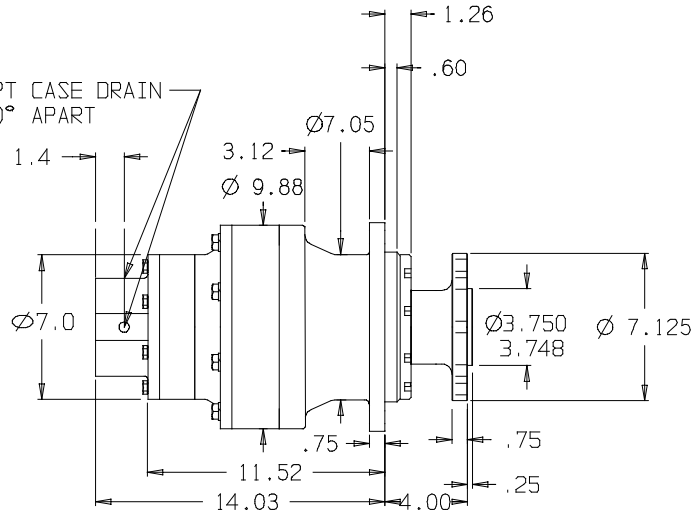
1/2-13 UNC, 2 PL.
.75 DEEP MIN
ON 5.75 DIA. B.C.

PILOT DEPTH
0.4"

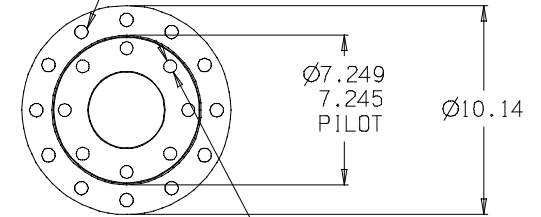
Ø 4.003
4.001

SAE B
2 BOLT
PILOT
CHAMFER FOR
2-155 O'RING

1/4 NPT CASE DRAIN
2 @ 90° APART



THRU HOLE
Ø.645/.655
12 HOLES EQ. SPACED
ON Ø8.750 B.C.



THRU HOLES
8 PLACES
ON 6.0 DIA. B.C.

©COPYRIGHT 2002, HECO GEAR, INC.

SUN GEARS- SUGGESTED MOTOR SHAFT LENGTHS

SUN GEAR	SHAFT TYPE	MIN. (IN.)	MAX. (IN.)
16B	7/8" 13T SPLINE	1.40	1.75
16C	1" 15T SPLINE	1.70	1.95
16D	1" ST. KEYED	1.80	2.10
16E	C/L 2000 BEARINGLESS	N/A	N/A
16F	C/L 4000 BEARINGLESS	N/A	N/A
16H	1 1/4" ST. KEYED	2.05	2.40
16I	1 1/4" 14T SPLINE	2.00	2.32
16M	1" SAE 6B SPLINE	1.95	2.30

THIS DRAWING CONTAINS PROPRIETARY AND CONFIDENTIAL INFORMATION OF HECO GEAR, INC. IN ACCEPTING THIS DRAWING, (CUSTOMER) ACKNOWLEDGES THE VALUE OF THE INTELLECTUAL PROPERTY CONTAINED HEREIN AND AGREES THAT THE INFORMATION IN THIS DRAWING IS THE PROPERTY OF AND PROPRIETARY TO HECO GEAR, INC. AND MAY NOT BE REPRODUCED WITHOUT THE EXPRESS WRITTEN PERMISSION OF HECO GEAR, INC. ALL RIGHTS RESERVED.



2300 DEL MONTE STREET
WEST SACRAMENTO, CA 95811
(916)-302-5411 FAX (916)-393-0282

TITLE
MODEL 20 ASSEMBLY

DESCRIPTION
HECO 20 MODEL CODE:
25DAF 2 5 31*

SIZE: D DRAWN BY: KSC DWG NO: 001012R REV: -
SCALE: 1:1 NOT SCALE DATE: 04/19/01 SHEET 1 OF 1

REV	DESCRIPTION	DATE	APPROVED
-	-	-	-
-	-	-	-
-	-	-	-
-	-	-	-
-	-	-	-