

* RATIO DOES NOT CHANGE INSTALLATION DIMENSIONS

WWW.HECOGEAR.COM

1/2-13 UNC, 2 PL.
.75 DEEP MIN
ON 5.75 DIA. B.C.

PILOT DEPTH
0.4"

Ø4.003
4.001

SAE B
2 BOLT
PILOT

CHAMFER FOR
2-155 O'RING

1/4 NPT CASE DRAIN
2 @ 90° APART

1.4

Ø7.0

.62

3/8 NPT
CASE DRAIN
4 PLACES

4.00

2.9

5.24

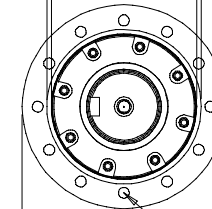
8.76

11.29

7.92

3.8

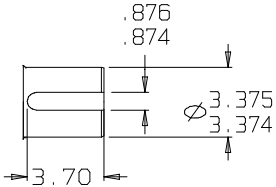
Ø7.500
7.495
Ø7.1
HOUSING



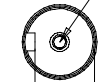
.625-11 UNC
1.4 DEEP
ON 8.375 DIA. B.C.
12 PLACES EG. SPACED

Ø9.88

OUTPUT SHAFT DETAIL



5/8-11 UNC
1.750 DEEP MIN
FULL THREAD



2.880
2.871

©COPYRIGHT 2002, HECO GEAR, INC.

SUN GEARS- SUGGESTED MOTOR SHAFT LENGTHS

SUN GEAR	SHAFT TYPE	MIN. (IN.)	MAX. (IN.)
16B	7/8" 13T SPLINE	1.40	1.75
16C	1" 15T SPLINE	1.70	1.95
16D	1" ST. KEYED	1.80	2.10
16E	C/L 2000 BEARINGLESS	N/A	N/A
16F	C/L 4000 BEARINGLESS	N/A	N/A
16H	1 1/4" ST. KEYED	2.05	2.40
16I	1 1/4" 14T SPLINE	2.00	2.32
16M	1" SAE 6B SPLINE	1.95	2.30

THIS DRAWING CONTAINS PROPRIETARY AND CONFIDENTIAL INFORMATION OF HECO GEAR, INC. IN ACCEPTING THIS DRAWING, (CUSTOMER) ACKNOWLEDGES THE VALUE OF THE INTELLECTUAL PROPERTY CONTAINED HEREIN AND AGREES THAT THE INFORMATION IN THIS DRAWING IS THE PROPERTY OF AND PROPRIETARY TO HECO GEAR, INC. AND MAY NOT BE REPRODUCED WITHOUT THE EXPRESS WRITTEN PERMISSION OF HECO GEAR, INC. ALL RIGHTS RESERVED.



2280 DEL MONTE STREET
WEST SACRAMENTO, CA 95605
(916)-372-5411 FAX (916)-373-0852

TITLE		MODEL 20 ASSEMBLY	
DESCRIPTION		HECO 20 MODEL CODE: 25DCF115 31*	
SIZE	DRAWN BY:	DWG NO.	REV
D	KSC	001012R-	-
SCALE:	DO NOT SCALE	DATE: 04/19/01	SHEET 1 OF 1