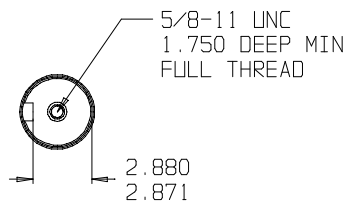
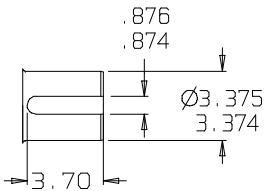


OUTPUT SHAFT DETAIL



SUN GEARS- SUGGESTED MOTOR SHAFT LENGTHS

SUN GEAR	SHAFT TYPE	MIN. (IN.)	MAX. (IN.)
20F	C/L 4000 BEARINGLESS	N/A	N/A
20G	C/L 6000 BEARINGLESS	N/A	N/A
20I	1 1/4" 14T SPLINE	1.97	2.32
-	-	-	-

©COPYRIGHT 2004, HECO GEAR, INC.

REV	DESCRIPTION	REVISION	DATE	APPROVED
-	-	-	-	-
-	-	-	-	-
-	-	-	-	-
-	-	-	-	-
-	-	-	-	-

THIS DRAWING CONTAINS PROPRIETARY AND CONFIDENTIAL INFORMATION OF HECO GEAR, INC. IN ACCEPTING THIS DRAWING, (CUSTOMER) ACKNOWLEDGES THE VALUE OF THE INTELLECTUAL PROPERTY CONTAINED HEREIN AND AGREES THAT THE INFORMATION IN THIS DRAWING IS THE PROPERTY OF AND PROPRIETARY TO HECO GEAR, INC. AND MAY NOT BE REPRODUCED WITHOUT THE EXPRESS WRITTEN PERMISSION OF HECO GEAR, INC. ALL RIGHTS RESERVED.



2350 DEL MONTE STREET
WEST SACRAMENTO, CA 95681
(916) 372-5411 FAX (916) 373-8852

TITLE MODEL 25 ASSEMBLY	DESCRIPTION HECO 20 MODEL CODE: 25FF1126*	SIZE D	DRAWN BY: KSC	ENG. NO. CERTIFIED 25 MODEL	REV -
SCALE: 1:1		DATE: 02/20/04		SHEET 1 OF 1	

* RATIO DOES NOT CHANGE INSTALLATION DIMENSIONS