



Commercial Duty Non-Driven Bearing Housing

Idler

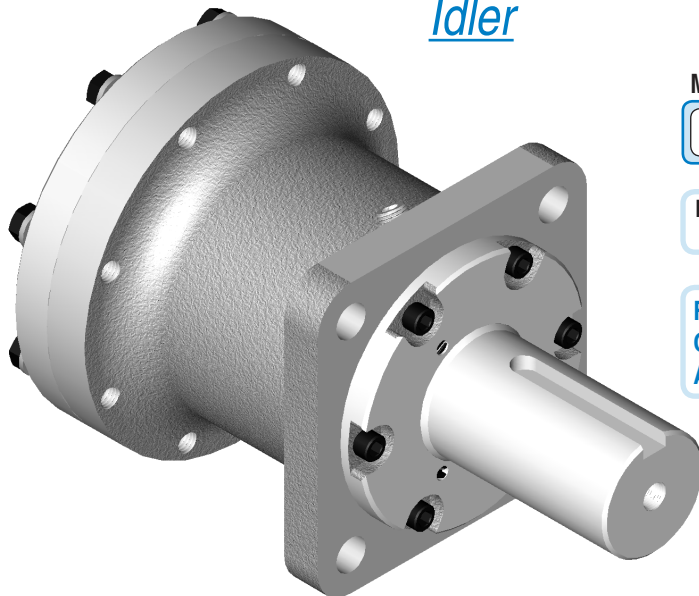
Model Code

Sample Model Code: 11HCF5-N1-1

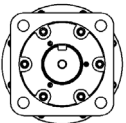
MODEL	MOUNT	SHAFT	INPUT	RATIO	REVISION
11H			- N	1	- 1
Model 11H			None	1:1	1st Rev

FF - Front Flange
CF - Center Flange
AF - "A" Flange

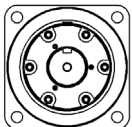
- | | |
|---------------------------------|---------------------------------|
| 1 - 2.250" Keyed Shaft | 5 - 5 Bolt Flange (1/2" studs) |
| 2 - 4 Bolt Flange (1/2" studs) | 52 - 5 Bolt Flange (5/8" studs) |
| 22 - 4 Bolt Flange (5/8" studs) | 6 - 2.000" Keyed Shaft |
| 3 - 2.250" J501 Tapered | 7 - 2.545" Round Shaft |
| 4 - 16 Tooth 8/16 Splined | 8 - 2.000" Hex Shaft |
| | 81 - 1.625" Square Shaft |
| | 9 - 9 Bolt Flange |



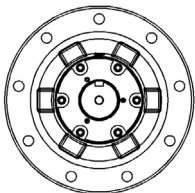
Mounting Options:



FF - Qty. Four 0.656" Dia. Through Holes Eq. Spaced on 6.375" Dia. Bolt Circle with a 5.00" Dia. Pilot (Same as SAE C; Cannot be used with Flanged Shafts)



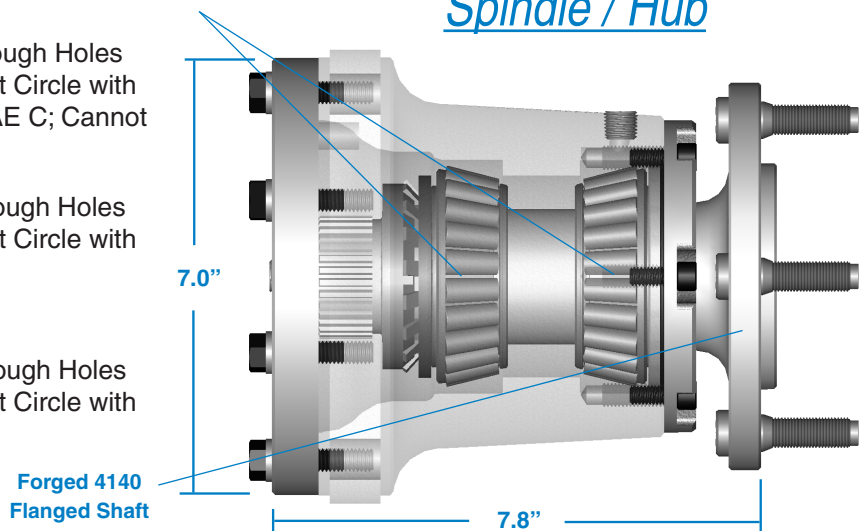
CF - Qty. Four 0.656" Dia. Through Holes Eq. Spaced on 8.250" Dia. Bolt Circle with a 7.00" Dia. Pilot



AF - Qty. Nine 0.607" Dia. Through Holes Eq. Spaced on 9.500" Dia. Bolt Circle with a 8.00" Dia. Pilot

Tapered Roller Shaft Bearings

Spindle / Hub



Model 11H Features:

- All 12 Model 16 Shaft Options Available (Keyed, Splined, Flanged, etc.)
- Mounting Configurations Offered in Front Flange (SAE C), Center Flange, and Large "A" Flange
- Heavy Duty Tapered Roller Bearings Retained with Lock Nut
- Totally Sealed and Oil Lubricated with Viton Shaft Seal Standard; Ideal for Harsh Environments
- Rated for Shaft Speeds up to 2000 RPM
- Allowable Radial Loads up to 20000 LBS (Depending on Load Location)
- Very Compact with Most Configurations under 12" Overall Length (Installation Drawings Available)