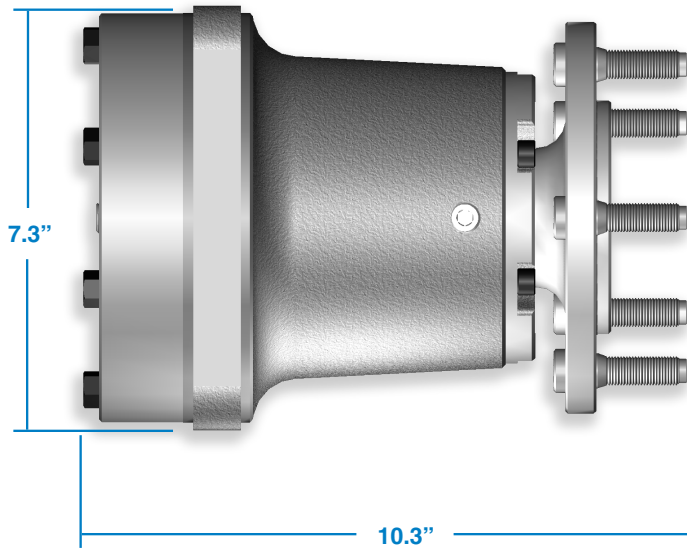


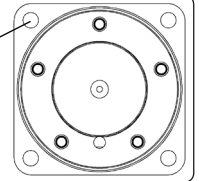


## Driven Bearing Housing



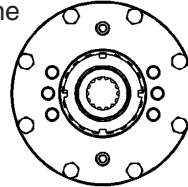
### Mounting Configuration:

**CF** - Qty. Four 0.656" Dia. Through Holes Eq. Spaced on 8.250" Dia. Bolt Circle with a 7.00" Dia. Pilot (Other mounts available)

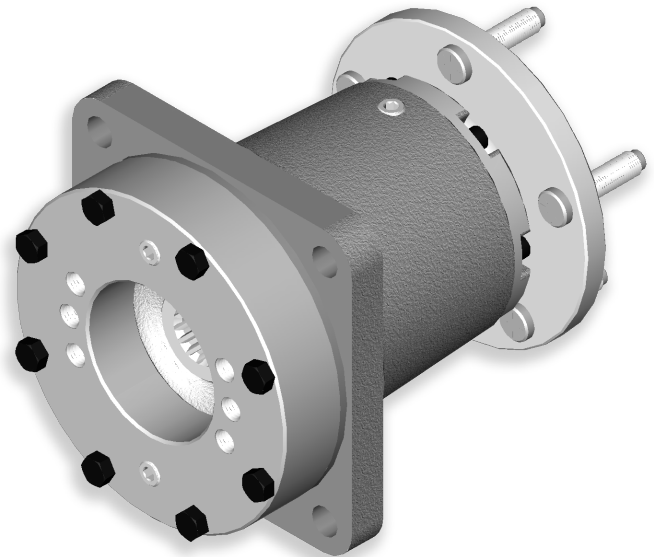
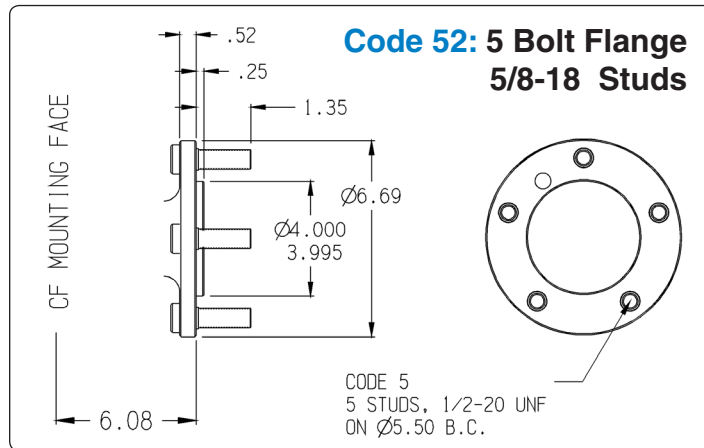
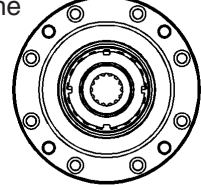


### Input Adapters:

**Code 4** - SAE A 2&4 Bolt with 1-1/4" 14T 12/24DP Spline



**Code 6** - SAE C 4 Bolt with 1-1/4" 14T 12/24DP Spline



**Model 11CF5-41-1** Shown Above with Code **5** Flanged Output Shaft and Code **4** SAE A Input with 1-1/4" 14T Spline

### Model 11 Features:

- Rugged, Impact Resistant, Tapered Roller Bearings Retained with Lock Nut, Designed for High Shaft Loads Eliminate Premature Motor Failures Due to Excessive Loads
- Totally Sealed and Oil Lubricated with Viton Shaft Seal Standard; Ideal for Harsh Environments
- Built in Seal Saver® Protects Shaft Seal from Foreign Debris
- Can Accept Most Hydraulic Motors Using 1-1/4" 14T Splined Shaft
- Rated for Shaft Speeds up to 2000 RPM
- Allowable Radial Loads up to 20000 LBS (Depending on Load Location)