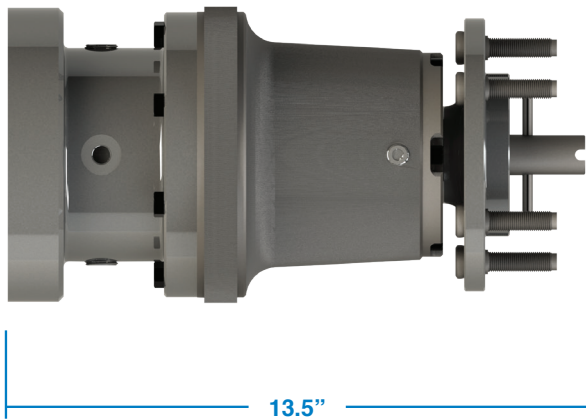


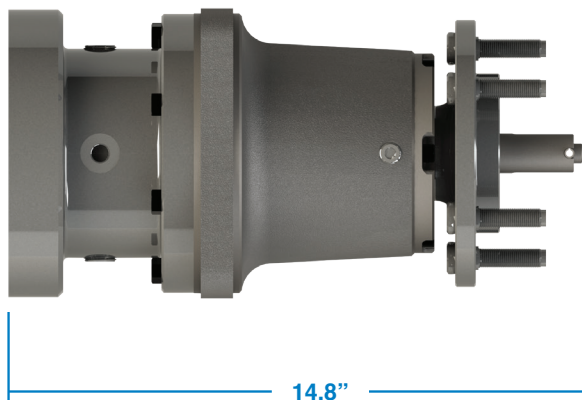


Bearing Housing with Disconnect

Motor Engaged

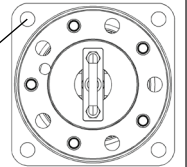


Motor Disengaged



Mounting Configuration:

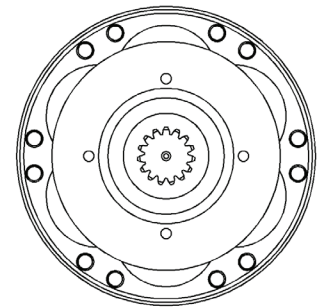
CF (Center Flange) - Qty. Four 0.656" Dia. Through Holes Eq. Spaced on 6.375" Dia. Bolt Circle with a 7.00" Dia. Pilot (Other mounts available)



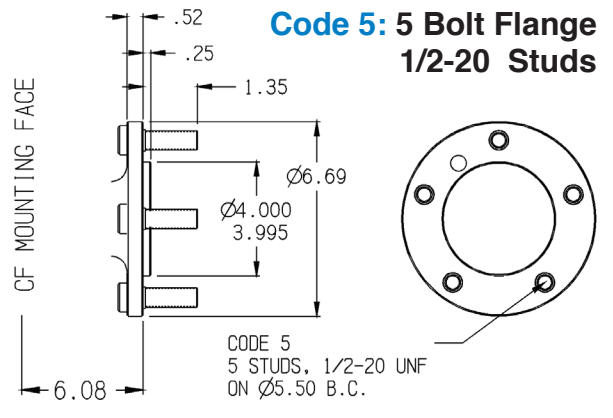
Input Adapters:

Shaft Lengths 2.10"-2.25"

Code P - Poclair MS02 Hydrabase with 1-1/4" 14T 12/24 DP Spline



Code 5: 5 Bolt Flange 1/2-20 Studs



Model 12CF5-41-1 Shown Above with Code 5 Flanged Output Shaft and Code 4 SAE A Input with 1-1/4" 14T Spline

Model 12 Features:

- Rugged, Impact Resistant, Tapered Roller Bearings Retained with Lock Nut, Designed for High Shaft Loads
- Mechanically Disengages from Motor Shaft When Forward Handle is Actuated
- Totally Sealed and Oil Lubricated with Viton Shaft Seal Standard; Ideal for Harsh Environments
- Accepts 1-1/4" 14T 12/24DP Motor Shafts with Lengths from 2.10"-2.25"
- Rated for Shaft Speeds up to 2000 RPM
- Towable at **Highway** Speeds when Disengaged