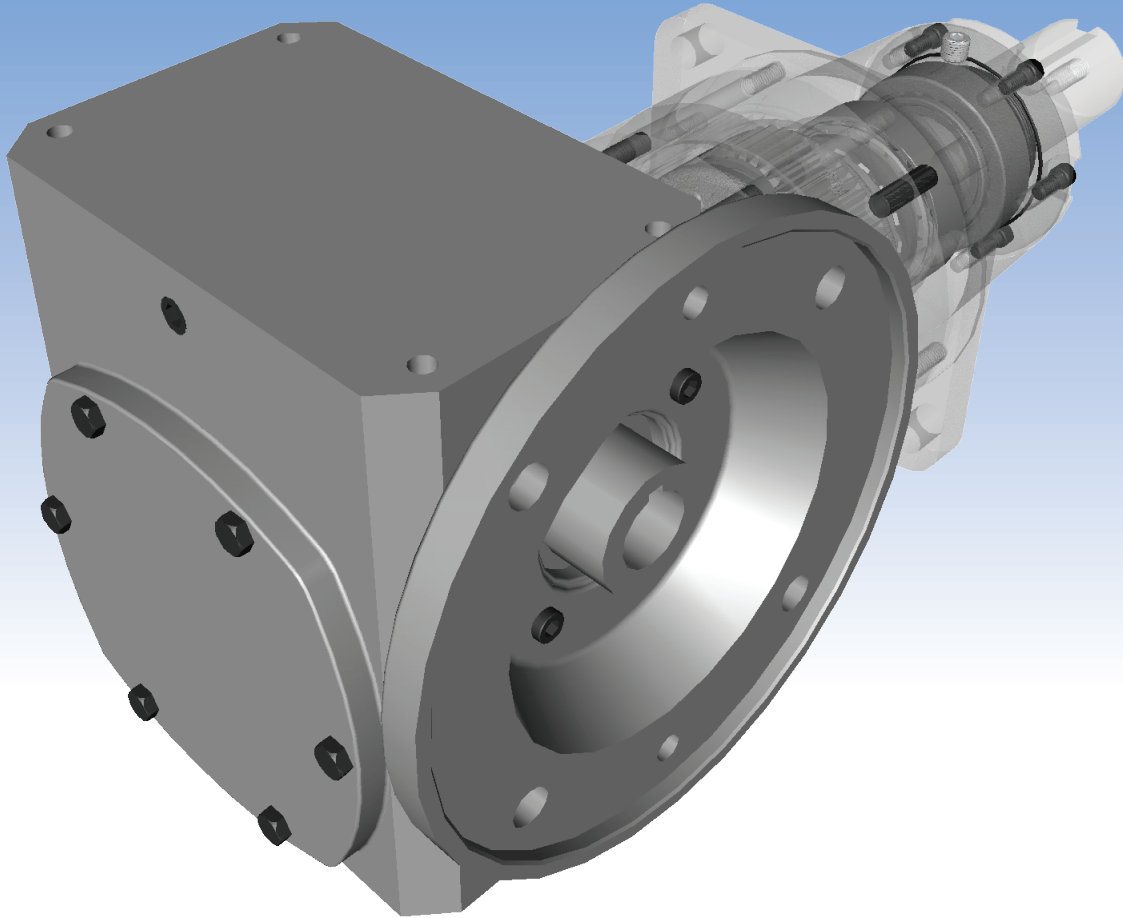


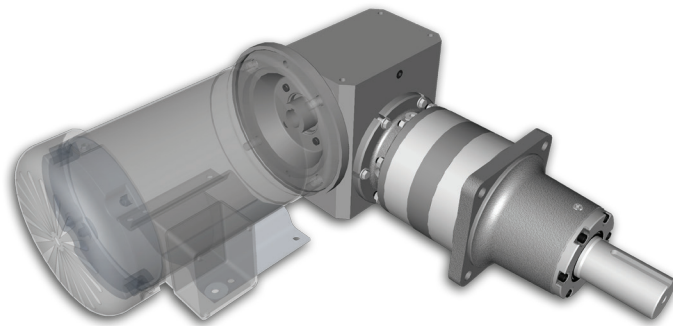
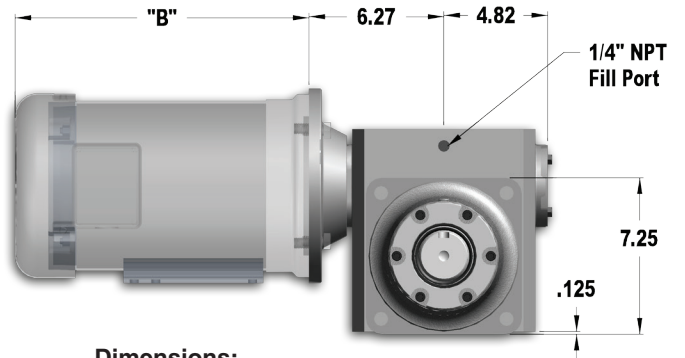
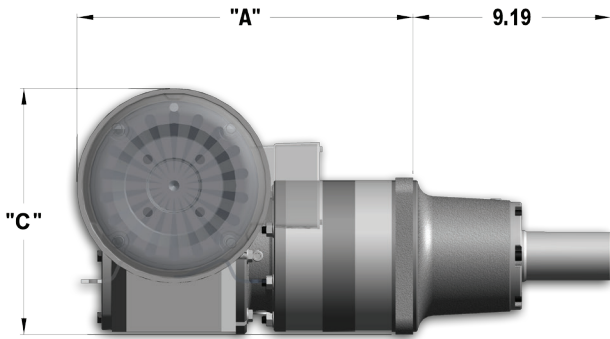
Electric Drive



HĒCO GEAR
Planetary Speed Reducers for Industry

P.O. Box 1388
West Sacramento, CA 95691
(916) 372-5411
Fax: (916) 373-0952
www.hecogear.com

Model 16



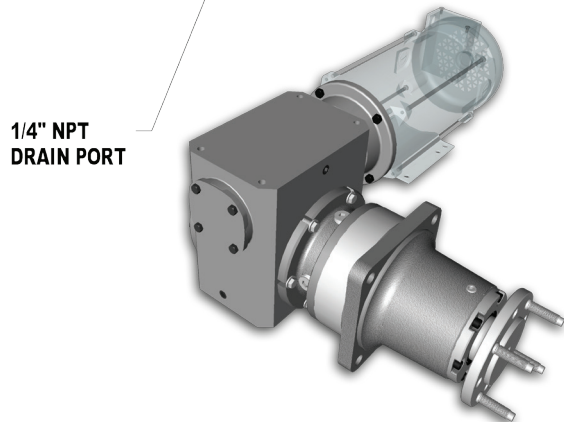
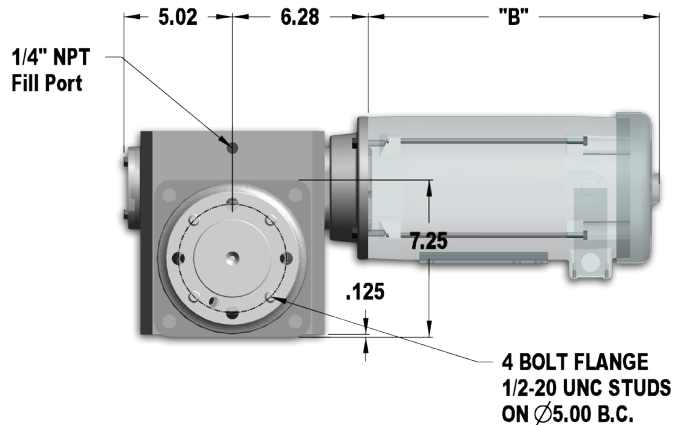
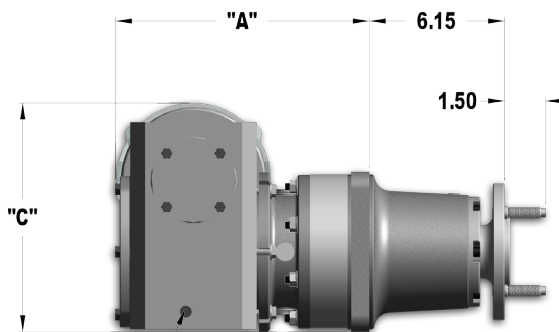
Dimensions:

Reduction	"A"
Double	12.38"
Triple	15.59"
Quad	18.80"

Motor Size	"B"	"C"
182TC	13.23"	11.25"
184TC	14.23"	11.25"
213TC	16.60"	11.25"
215TC	18.79"	11.25"

**Dimensions may vary by motor manufacturer*

Model 16TWCF1-180R135-7 Shown with Code **1** Keyed Output Shaft and Right Position **180** Frame Motor (Not Included)



Dimensions:

Reduction	"A"
Double	12.38"
Triple	15.59"
Quad	18.80"

Motor Size	"B"	"C"
143TC	10.87"	10.05"
145TC	11.87"	10.05"

**Dimensions may vary by motor manufacturer*

Model 16DWCF2-140L156-7 Shown with Code **2** Flanged Output Shaft and Left Position **140** Frame Motor (Not Included)

Model 16

- Highly Energy Efficient, Resulting in Reduced Electrical Costs
- Use with Variable Frequency Drive (VFD) For Precise and Easy Speed and Torque Control
- Interchangeable Mounting with HECO Hydraulic Drives
- Available From your HECO Distributor

HECO Website:

www.hecogear.com

Delivery: Standard delivery on all Heco gearboxes is 4-6 weeks ARO.

Expedited Shipment: Available for all gearboxes and components.

Data Sheets: On the HECO website website configurator you can your model code from the information below and generate a data sheet with all of the order and application information you need to specify your HECO electric drive.

2D/3D CAD Models & Drawings: Available for download on the HECO website

Model Codes and Ordering Information

Sample Model Code: 16QWCF3-210R703-7

MODEL	# OF STAGES	MOUNT	OUTPUT SHAFT	MOTOR FRAME	MOTOR POSITION	RATIO	DESIGN NUMBER	OPTIONS
16				-			- 7	
Model 16					R - Right Side L - Left Side		Current Design: 7	*See Options Below
DW - Double Reduction TW - Triple Reduction QW - Quad Reduction <i>*Determined By Ratio</i>		FF - Front Flange CF - Center Flange AF - "A" Flange		140 - 143TC & 145TC 180 - 182TC & 184TC 210 - 213TC & 215TC		26.0:1 - Double 39.0:1 - Double 52.0:1 - Double 78.0:1 - Double 104.0:1 - Double 130.0:1 - Double 135.2:1 - Triple 156.0:1 - Double 202.8:1 - Triple 208.0:1 - Double 260.0:1 - Double 270.4:1 - Triple 312.0:1 - Double 364.0:1 - Double 405.6:1 - Triple	416.0:1 - Double 540.8:1 - Triple 676.0:1 - Triple 703.0:1 - Quad 811.2:1 - Triple 1054.6:1 - Quad 1081.6:1 - Triple 1352.0:1 - Triple 1406.1:1 - Quad 1622.4:1 - Triple 1892.8:1 - Triple 2109.1:1 - Quad 2163.2:1 - Triple 4218.2:1 - Quad 5624.3:1 - Quad	
1 - 2.250" Keyed Shaft 2 - 4 Bolt Flange (1/2" studs) 22 - 4 Bolt Flange (5/8" studs) 23 - 4 Bolt Flange (1/2" screw-in studs) 3 - 2.250" J501 Tapered 4 - 16 Tooth 8/16 Splined 5 - 5 Bolt Flange (1/2" studs)			52 - 5 Bolt Flange (5/8" studs) 53 - 5 Bolt Flange (1/2" studs screw in studs) 6 - 2.000" Keyed Shaft 7 - 2.545" Round Shaft 8 - 2.000" Hex Shaft 81 - 1.625" Square Shaft 9 - 9 Bolt Flange (5/8" studs)					

**Higher Ratios Are Available*

Options:

A2 - Viton® Seal Upgrade: Replaces standard Buna shaft seals and o-rings with long life Fluoroelastomer (Viton®) shaft seals and o-rings for harsh environments.

A22 - Nickel Plating (MIL-C-26074E; Class 2, Grade 0005): Adds nickel plating to shaft and seal carrier to improve seal life in corrosion prone environments. Also replaces normal black-oxide seal carrier bolts with stainless steel.

A151 - Factory Filled: Unit will be filled with premium 85w-140 gear oil for maximum life and set at proper level for horizontal application. Vertical application available on request. Makes unit ready to run out of the box.

POWER SAVER Electric Conveyor Drive

New From Heco



- Reduce Power Consumption
- Electric VFD Control
- Count Cars Per Hour
- Interchangeable Mounting for Heco Hydraulic Drives
- Available Through Your Equipment Manufacturer or After Market Dealer

HĒCO GEAR

30
Years

The Industry Standard in
Carwash Conveyor Drives

HecoGear.com/conveyor

Available Through Your Equipment Manufacturer or After Market Dealer



HĒCO GEAR

Planetary Speed Reducers for Industry

2350 Del Monte Street • West Sacramento, CA 95691
PHONE 916.372.5411 • FAX 916.373.0952 • www.hecogear.com