

NEW

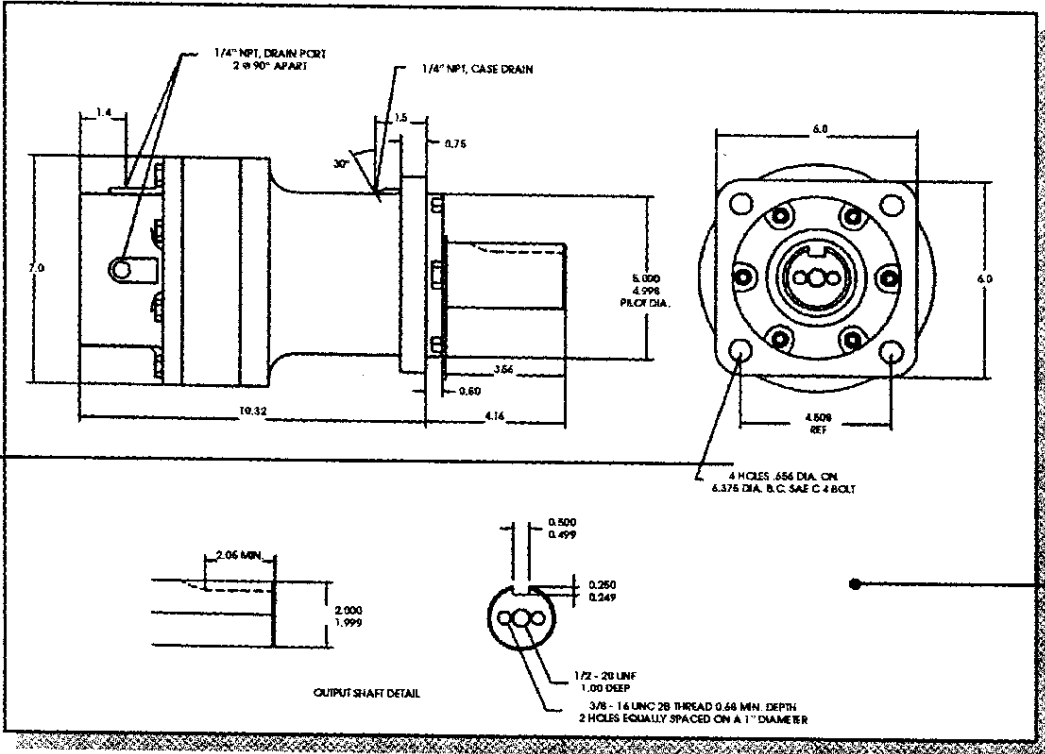
HECO

MODEL 16

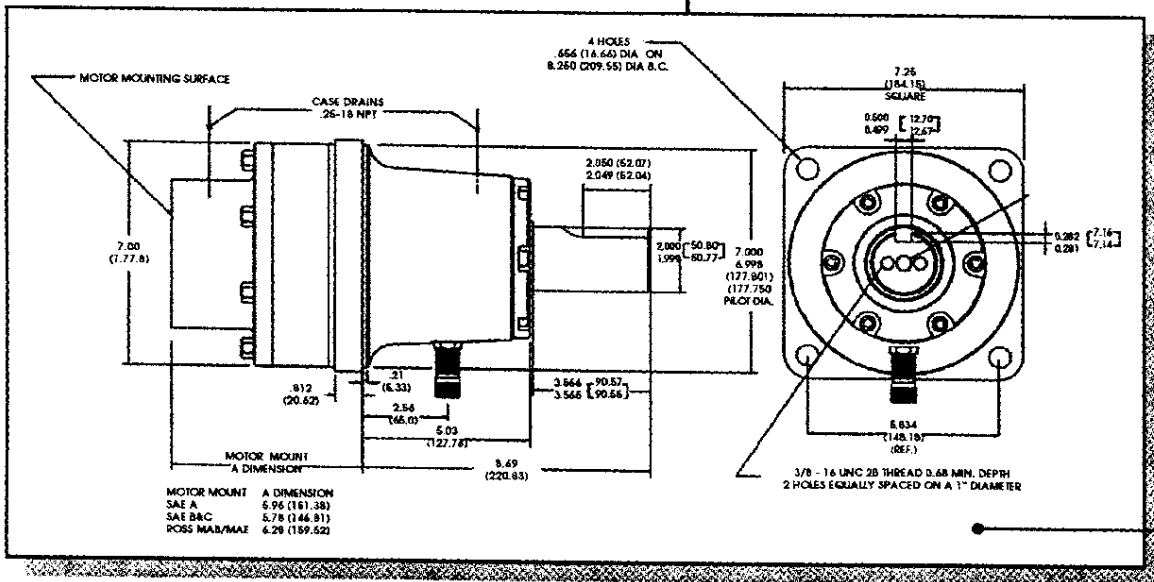
2" OUTPUT

HECO Incorporated
 2350 Del Monte Street, Unit A
 P.O. Box 835
 West Sacramento, CA 95691
 Phone (916) 372-5411
 Fax (916) 373-0952
 www.heco-inc.com

HECO MODEL 16
 Single Reduction
 27,500 lb/in Maximum Continuous Torque Output
 5.2 to 1 Reduction Ratio
 0 to 350 RPM Output Speed
 21,000 lbs. Maximum Radial Shaft Load



16FF -
 FRONT FLANGE
 WITH CODE 6 SHAFT



16CF -
 CENTER FLANGE
 WITH CODE 6 SHAFT