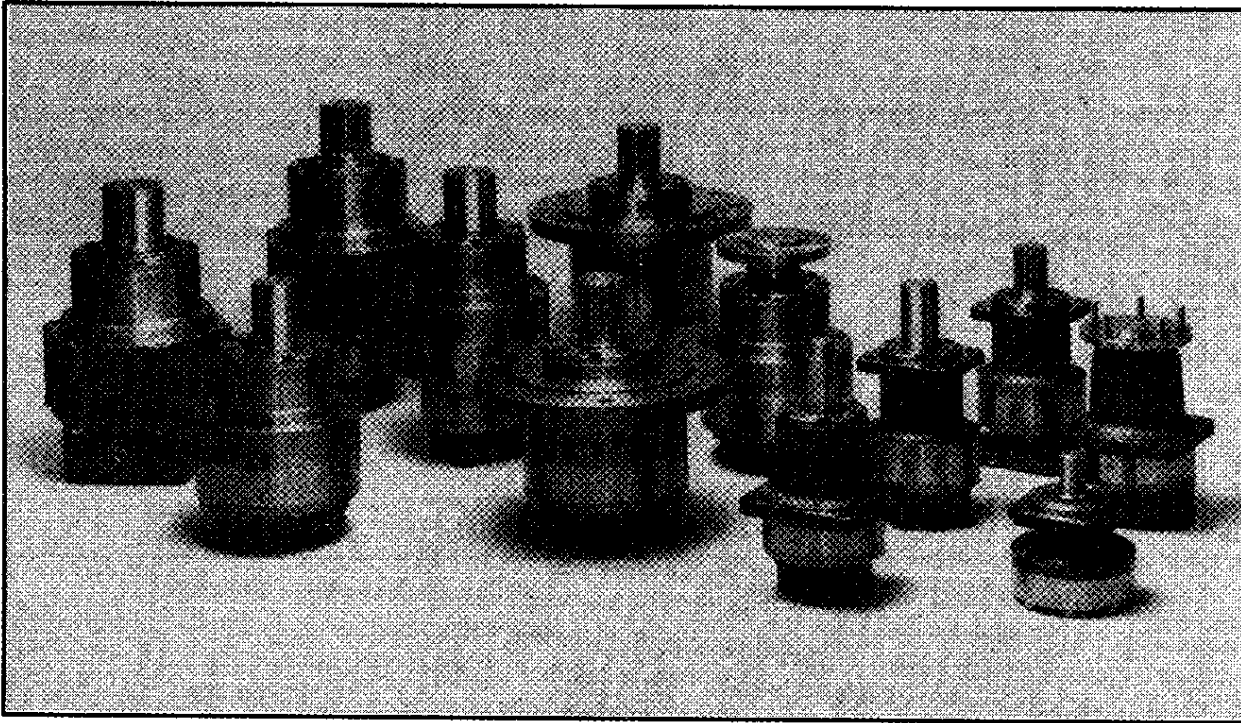


MODEL 16

PARTS AND LUBRICATION INFORMATION

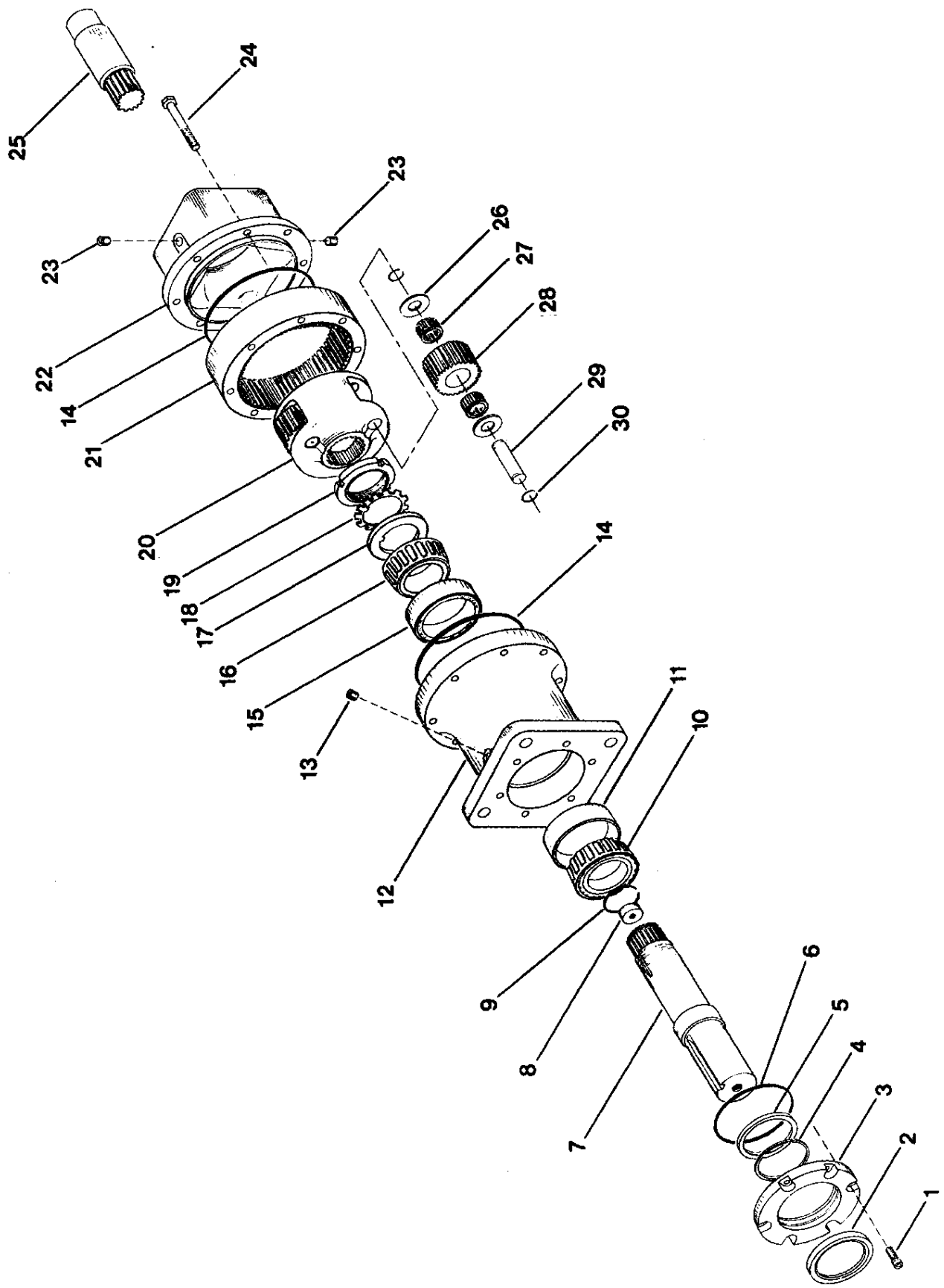


P.O. Box 1388
West Sacramento, CA 95691
(916) 372-5411
Fax: (916) 373-0952
www.heco-inc.com

MODEL 16

ITEM #	PART #	DESCRIPTION	QTY/ASSY
1.	15111	Cap Screw	6
2.	15106	Shaft Seal	1
3.	15056	Seal Carrier	1
4.	15105	Backup Ring	1
5.	15301	Quad Ring	1
6.	15133	O Ring	1
7.	15053	Output Shaft	1
	2.250"	Straight Keyed	
	15054	2.250" Tapered	
	15099	16T 8/16 Spline	
	15057	4-Bolt Flange	
	15224	5-Bolt Flange	
8.	150152	Thrust Washer	1
9.	15011	Retaining Ring	1
10.	15118	Cone	2
11.	15128	Cup	2
12.		Bearing Housing	1
	15052	Front Flange	
	15055	Center Flange	
13.	15129	Pipe Plug	3
14.	15102	O Ring	2
15.	15128	Cup	2
16.	15118	Cone	2
17.	15163	Keyed Washer	1
18.	15162	Lock Washer	1
19.	15138	Lock Nut	1
20.	15004	Planet Carrier	1
21.	15003	Internal Gear	1
22.		Motor Adapter	1
	15205	SAE A 2-Bolt	
	15064	SAE B 2-Bolt	
	15018	SAE B 4-Bolt	
	15209	SAE C 2- & 4-Bolt	
	150901	Ross MAB & MAE A 4-Bolt	
23.	15129	Pipe Plug	3
24.	15110	Bolt	8
25.		Sun Gear Kit (Input Shaft Adapter)	1
	16B	7/8"---13T Spline	
	16C	1"---15T Spline	
	16D	1" Straight Keyed	
	16E	Charlynn 2000 Bearingless	
	16F	Charlynn 4000 Bearingless	
	16H	1 1/4" Straight Keyed	
	16I	1 1/4"---14T Spline	
	16M	1" SAE 6B Spline	
	16O	7/8" Straight Keyed	
	16P	1 1/8" Straight Keyed	

ITEM #	PART #	DESCRIPTION	QTY/ASSY
26.	15112	Thrust Washer	6
27.	15115	Planet Bearing	6
28.	15006	Planet Gear	3
29.	15008	Planet Pin	3
30.	15107	Retaining Ring	3
	15930	Seal Kit - Buna	6
	15932	Seal Kit - Viton	
		Seal Kits include items indicated by *	



LUBRICATION INSTRUCTIONS

HÉCO planetary speed reducers may be lubricated as a self-contained unit (standard hydraulic motor), or as an integral part of the hydraulic system (bearingless motor).

In applications where the speed reducer is lubricated as a self-contained, horizontal unit, it is recommended that the unit be half filled with EP oil (see chart for amount and proper grade gear oil). Self-contained, vertical installations (output shaft down) require the unit to be filled to the center line of the upper planetary gear train. For self-contained vertical installations (output shaft up) consult HÉCO. When installed as a self-contained unit, ensure adequate ventilation is provided to allow for lubricant expansion.

The oil should be changed after the first 50 hours and 100 hours of operation, and every 1000 hours thereafter. Oil should be drained while the unit is at operating temperature. The unit should be cleaned with flushing oil (use of solvents should be avoided). NOTE: The importance of a thorough gear case cleaning with flushing oil during the first lubricant change cannot be overemphasized. If the maximum oil operating temperature is exceeded, change oil immediately.

In applications where the speed reducer is lubricated by oil flow from the bearingless hydraulic motor, ensure that a minimum oil flow of 2GPM is maintained, a separate case drain line should be connected directly from the top of the reducer (ensure the reducer remains full) to the oil reservoir. For maximum cooling and lubrication the case drain should be connected to the drain port at the opposite end of the reducer from the hydraulic motor. Reducer case pressure must not exceed 15 PSI with the standard shaft seal or 50 PSI with the optionally available high pressure seal installed.

Consult HÉCO for applications involving Char-Lynn 006 design 2000 series bearingless motors, or for additional information.

CAPACITY:

Model:	Horizontal Operation (½ Full):	Total (Capacity):
M-16	20 oz.	40 oz.
M-20	50 oz.	105 oz.
M-20D	50 oz.	105 oz.
M-50	100 oz.	200 oz.
M-50D	85 oz.	170 oz.
M-52D	85 oz.	170 oz.

OIL GRADE:

Single Reduction (RPM Out):

0-25 RPM — AGMA #5
25-100 RPM — AGMA #3
100-200 RPM — AGMA #1
200+ — Consult HÉCO

Double Reduction (RPM Out):

0-40 RPM — AGMA #5
40-60 RPM — AGMA #1
60+ — Consult HÉCO

MAXIMUM OIL TEMPERATURE:

140° F Continuous
170° F Intermittent
For higher temperatures, consult HÉCO

Distributed by:



P.O. Box 1388
West Sacramento, CA 95691
(916) 372-5411
Fax: (916) 373-0952
www.heco-inc.com