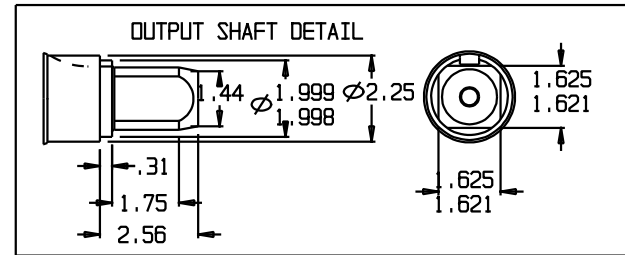


| SUN GEARS- SUGGESTED MOTOR SHAFT LENGTHS | | | |
|--|----------------------|------------|------------|
| SUN GEAR | SHAFT TYPE | MIN. (IN.) | MAX. (IN.) |
| 16B | 7/8" 13T SPLINE | 1.40 | 1.75 |
| 16C | 1" 15T SPLINE | 1.70 | 1.95 |
| 16D | 1" ST. KEYED | 1.80 | 2.10 |
| 16E | C/L 2000 BEARINGLESS | N/A | N/A |
| 16F | C/L 4000 BEARINGLESS | N/A | N/A |
| 16H | 1 1/4" ST. KEYED | 2.05 | 2.40 |
| 16I | 1 1/4" 14T SPLINE | 2.00 | 2.32 |
| 16M | 1" SAE 6B SPLINE | 1.95 | 2.30 |



THIS DRAWING CONTAINS PROPRIETARY AND CONFIDENTIAL INFORMATION OF HECO GEAR, INC. IN ACCEPTING THIS DRAWING, (CUSTOMER) ACKNOWLEDGES THE VALUE OF THE INTELLECTUAL PROPERTY CONTAINED HEREIN AND AGREES THAT THE INFORMATION IN THIS DRAWING IS THE PROPERTY OF AND PROPRIETARY TO HECO GEAR, INC. AND MAY NOT BE REPRODUCED WITHOUT THE EXPRESS WRITTEN PERMISSION OF HECO GEAR, INC. ALL RIGHTS RESERVED.

©COPYRIGHT 2001, HECO GEAR, INC.

| | | | |
|-----|-------------|------|----------|
| REV | DESCRIPTION | DATE | APPROVED |
| | | | |
| | | | |
| | | | |
| | | | |

HECO GEAR
2500 WILLOW STREET
WEST SIMPSONVILLE, OH 45051
937-335-9101 FAX 937-335-9102

TITLE
MODEL 16 ASSEMBLY

DESCRIPTION
HECO 16 MODEL CODE:
16DC F81527

SIZE: DRAWN BY: KSC DES. NO. _____ REF. _____
D
SCALE: TO NOT SCALE DATE: 04/28/01 SHEET 1 OF 1