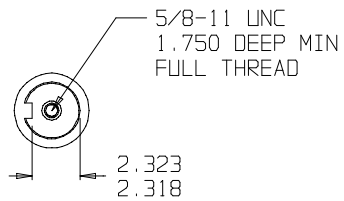
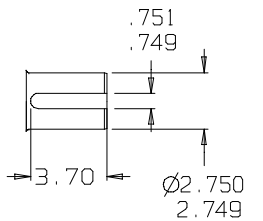


OUTPUT SHAFT DETAIL



| SUN GEARS- SUGGESTED MOTOR SHAFT LENGTHS | | | |
|--|----------------------|------------|------------|
| SUN GEAR | SHAFT TYPE | MIN. (IN.) | MAX. (IN.) |
| 20F | C/L 4000 BEARINGLESS | N/A | N/A |
| 20G | C/L 6000 BEARINGLESS | N/A | N/A |
| 20I | 1 1/4" 14T SPLINE | 1.97 | 2.32 |
| - | - | - | - |

©COPYRIGHT 2004, HECO GEAR, INC.

| REV | DESCRIPTION | DATE | APPROVED |
|-----|-------------|------|----------|
| - | - | - | - |
| - | - | - | - |
| - | - | - | - |
| - | - | - | - |
| - | - | - | - |
| - | - | - | - |

THIS DRAWING CONTAINS PROPRIETARY AND CONFIDENTIAL INFORMATION OF HECO GEAR, INC. IN ACCEPTING THIS DRAWING, (CUSTOMER) ACKNOWLEDGES THE VALUE OF THE INTELLECTUAL PROPERTY CONTAINED HEREIN AND AGREES THAT THE INFORMATION IN THIS DRAWING IS THE PROPERTY OF AND PROPRIETARY TO HECO GEAR, INC. AND MAY NOT BE REPRODUCED WITHOUT THE EXPRESS WRITTEN PERMISSION OF HECO GEAR, INC. ALL RIGHTS RESERVED.



250 DEL. HOME STREET
WEST SIMONSBURG, IA 50566
(515) 372-5411 FAX (515) 372-8852

| TITLE | | REV | |
|---------------------|-----------|--------------------|--------------|
| MODEL 25 ASSEMBLY | | - | - |
| DESCRIPTION | | - | - |
| HECO 20 MODEL CODE: | | - | - |
| 25FF1 26* | | - | - |
| SIZE | DRAWN BY: | DWG NO. | REV |
| D | KSC | CERTIFIED 25 MODEL | - |
| SCALE: DO NOT SCALE | | DATE: 02/20/04 | SHEET 1 OF 1 |

* RATIO DOES NOT CHANGE INSTALLATION DIMENSIONS