

### Flange and Shaft

Code	Description
25FF	Model 25 Front Flange Mount
11	3.375" Straight Keyed Shaft

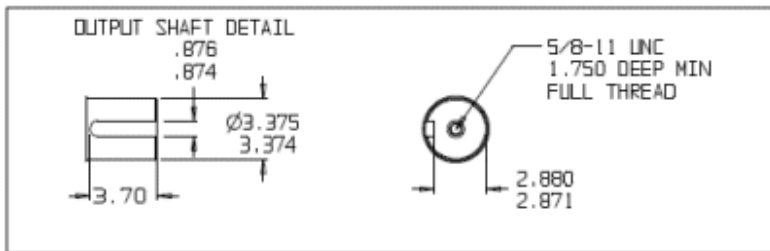
### Performance Data

Torque	in-lbs	ft-lbs	Nm
Continuous	85,000 in-lbs	7,080 ft-lbs	9,605 Nm
Intermittent	110,000 in-lbs	9,165 ft-lbs	12,425 Nm
Peak	135,000 in-lbs	11,250 ft-lbs	15,225 Nm

Radial Load	30,000 lbs
Approximate Weight	130 lbs

Maximum Speed	Ratio	Output rpm	Input rpm
	4.8	250	1200

\* Maximum life in high torque applications will be achieved at lower output speeds. Conversely, maximum life in high speed applications will be achieved at lower output torques.



### Motor Adapter Options

Code	Description
6	SAE C 5.00" Pilot 2&4 Bolt
2	SAE A 3.25" Pilot 4 Bolt
7	SAE D 6.00" Pilot 2&4 Bolt

### Ratio Options

Code	Description
4	4.8 : 1 Single Reduction
6	6.0 : 1 Single Reduction

### Order Information and Model Code

25FF	11				
Flange	Shaft	Motor Adapter	Ratio	Design Code	Special Options

### Sungear (Input Motor Shaft) Options

Code	Description
20F6	6.0:1 Ratio Charlynn 4000 Bearingless
20G4	4.8:1 Ratio Charlynn 6000 Bearingless
20G6	6.0:1 Ratio Charlynn 6000 Bearingless
2014	4.8:1 Ratio 1-1/4" - 14T Spline 12/24 DP
2016	6.0:1 Ratio 1-1/4" - 14T Spline 12/24 DP
20F4	4.8:1 Ratio Charlynn 4000 Bearingless
25L4	4.8:1 Ratio 1-1/2" - 17T Spline 12/24 DP
25L6	6.0:1 Ratio 1-1/2" - 17T Spline 12/24 DP
25K6	6.0:1 Ratio 1-3/4" - 13T Spline 8/164 DP
25L	Spacer for Charlynn 6000 & VIS Standard Motors

### Radial Load Chart

**Shaft Load vs. Load Position**  
**18,000,000 Revolution L<sub>10</sub> Life**  
**85W-140 Gear Oil**

